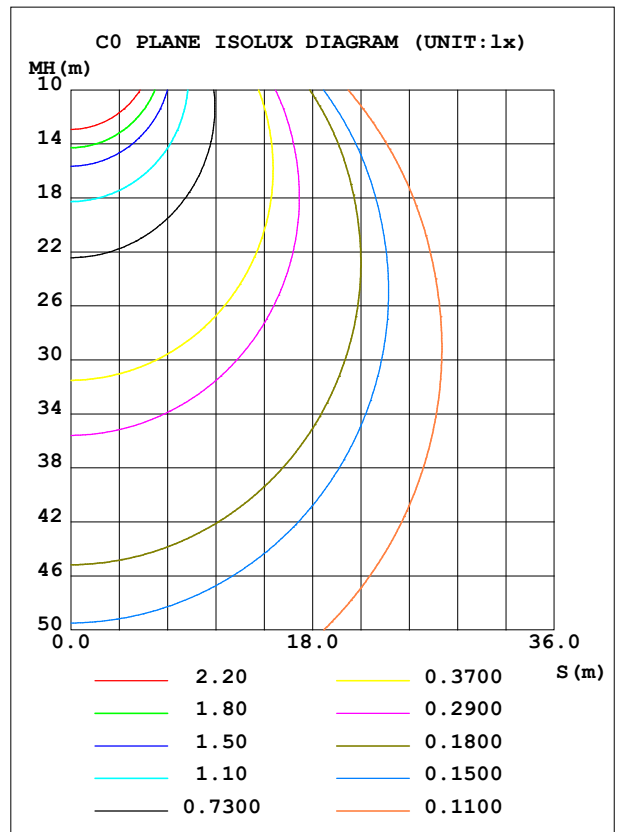
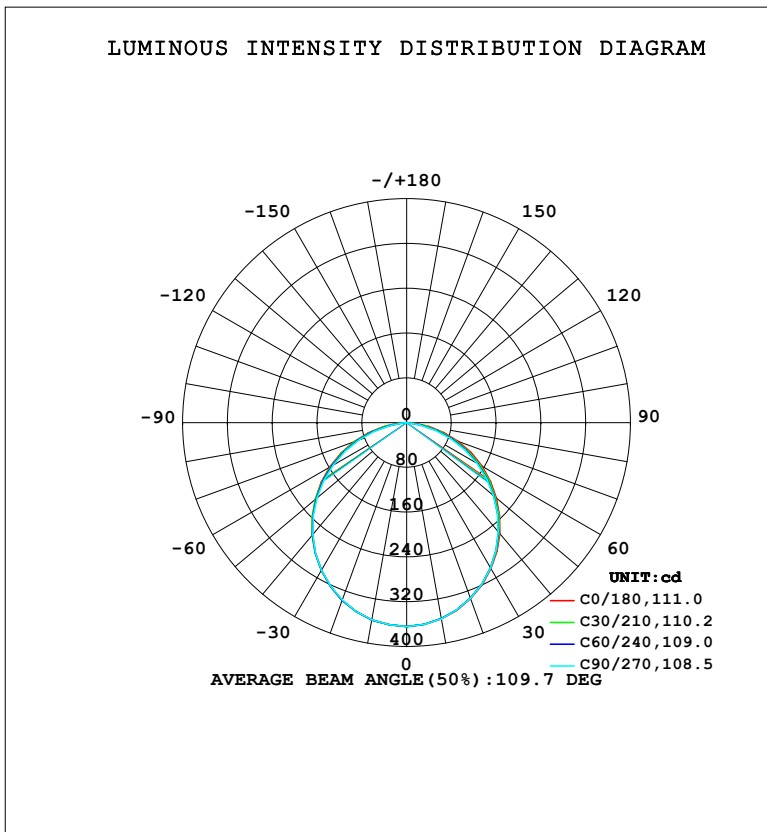


LUMINAIRE PHOTOMETRIC TEST REPORT

| | | |
|---|-------|------------------|
| Test:U:220.40V I:0.0870A P:10.237W PF:0.5339 Freq:50.00Hz Lamp Flux:1001.86x1 lm | | |
| NAME: | TYPE: | WEIGHT: |
| SPEC.: | DIM.: | SERIAL No.: |
| MFR.: EVERFINE | SUR.: | Shielding Angle: |

| DATA OF LAMP | | PHOTOMETRIC DATA | | | | Eff: 97.86 lm/W |
|-------------------|---------|-----------------------|--------|---------------------|-----------|-----------------|
| MODEL | 116C | I _{max} (cd) | 364.1 | S/MH (C0/180) | 1.25 | |
| NOMINAL POWER (W) | 10 | LOR (%) | 100.0 | S/MH (C90/270) | 1.24 | |
| RATED VOLTAGE (V) | 220 | TOTAL FLUX (lm) | 1001.9 | η UP, DN (C0-180) | 0.0, 49.6 | |
| NOMINAL FLUX (lm) | 1001.86 | CIE CLASS | DIRECT | η UP, DN (C180-360) | 0.0, 50.4 | |
| LAMPS INSIDE | 1 | η up (%) | 0.0 | CIBSE SHR NOM | 1.25 | |
| TEST VOLTAGE (V) | 219.5 | η down (%) | 100.0 | CIBSE SHR MAX | 1.35 | |



C Range: 0 - 360DEG
 C Interval: 15.0DEG
 Test Speed: HIGH
 Temperature: 25.3°C
 Operators: DAMIN
 Test Date: 2024-01-24

γ Range: 0 - 90DEG
 γ Interval: 5.0DEG
 Test System: EVERFINE GO-2000B_V1 SYSTEM V2.00.473
 Humidity: 65.0%
 Test Distance: 9.401m [K=1.0000]
 Remarks:

ZONAL FLUX DIAGRAM

ZONAL FLUX DIAGRAM:

| γ | C0 | C45 | C90 | C135 | C180 | C225 | C270 | C315 | γ | Φ zone | Φ total | %lum,lamp |
|----------|-----------------------|--------|--------|--------|--------|--------|--------|--------|----------|-------------|--------------|-----------|
| 10 | 356.0 | 357.1 | 355.8 | 358.0 | 357.8 | 356.5 | 357.9 | 355.9 | 0- 10 | 34.39 | 34.39 | 3.43,3.43 |
| 20 | 334.4 | 335.4 | 333.9 | 337.1 | 337.5 | 335.7 | 337.1 | 334.7 | 10- 20 | 98.15 | 132.5 | 13.2,13.2 |
| 30 | 301.3 | 301.8 | 299.8 | 304.3 | 304.9 | 303.1 | 304.5 | 301.8 | 20- 30 | 147.7 | 280.2 | 28,28 |
| 40 | 258.9 | 257.9 | 255.1 | 260.9 | 262.7 | 260.8 | 261.2 | 259.3 | 30- 40 | 176.5 | 456.8 | 45.6,45.6 |
| 50 | 209.1 | 206.3 | 202.4 | 209.5 | 213.1 | 210.4 | 209.2 | 208.7 | 40- 50 | 181.2 | 638.0 | 63.7,63.7 |
| 60 | 155.4 | 149.5 | 145.5 | 152.5 | 158.4 | 154.8 | 151.5 | 152.9 | 50- 60 | 162.0 | 800.0 | 79.8,79.8 |
| 70 | 97.83 | 89.94 | 84.40 | 92.20 | 100.6 | 95.30 | 90.80 | 93.01 | 60- 70 | 121.6 | 921.5 | 92,92 |
| 80 | 41.00 | 30.89 | 24.36 | 31.94 | 43.01 | 35.50 | 30.13 | 33.49 | 70- 80 | 66.62 | 988.2 | 98.6,98.6 |
| 90 | 0.6565 | 0.6369 | 0.6213 | 0.6228 | 0.7340 | 0.7691 | 0.7842 | 0.7860 | 80- 90 | 13.68 | 1002 | 100,100 |
| 100 | | | | | | | | | 90-100 | | | |
| 110 | | | | | | | | | 100-110 | | | |
| 120 | | | | | | | | | 110-120 | | | |
| 130 | | | | | | | | | 120-130 | | | |
| 140 | | | | | | | | | 130-140 | | | |
| 150 | | | | | | | | | 140-150 | | | |
| 160 | | | | | | | | | 150-160 | | | |
| 170 | | | | | | | | | 160-170 | | | |
| 180 | | | | | | | | | 170-180 | | | |
| DEG | LUMINOUS INTENSITY:cd | | | | | | | | | UNIT:lm | | |

Conical surface Flux(90deg): 548.36 lm

%lum = 54.7%

%lamp = 54.7%

Conical surface Flux(130deg): 866.91 lm

%lum = 86.5%

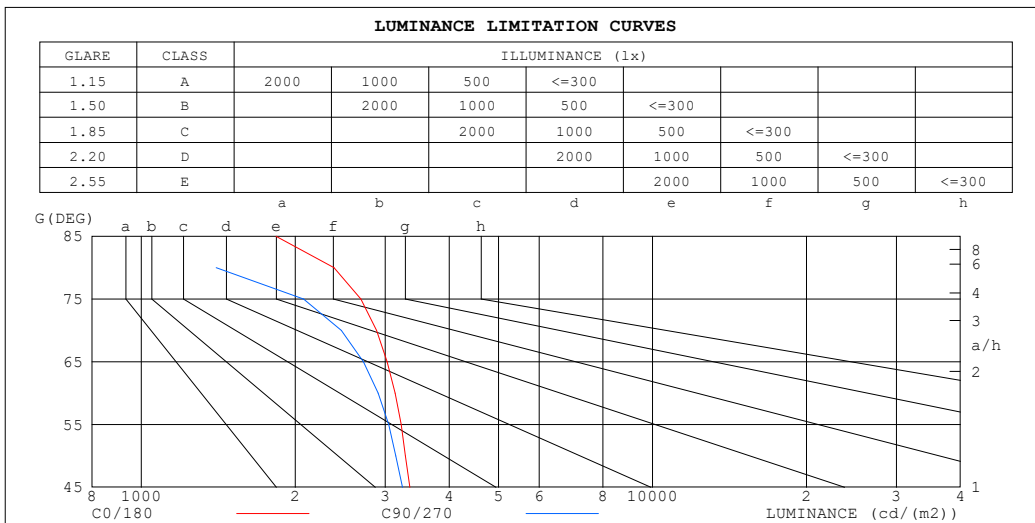
%lamp = 86.5%

C Range: 0 - 360DEG
 C Interval: 15.0DEG
 Test Speed: HIGH
 Temperature:25.3°C
 Operators:DAMIN
 Test Date:2024-01-24

γ Range: 0 - 90DEG
 γ Interval: 5.0DEG
 Test System:EVERFINE GO-2000B_V1 SYSTEM V2.00.473
 Humidity:65.0%
 Test Distance:9.401m [K=1.0000]
 Remarks:

LUMINANCE LIMITATION CURVES

| | | |
|---|-------|------------------|
| Test:U:220.40V I:0.0870A P:10.237W PF:0.5339 Freq:50.00Hz Lamp Flux:1001.86x1 lm | | |
| NAME: | TYPE: | WEIGHT: |
| SPEC.: | DIM.: | SERIAL No.: |
| MFR.: EVERFINE | SUR.: | Shielding Angle: |



| LUMINANCE cd/ (m2) | | |
|--------------------|--------|---------|
| G (DEG) | C0/180 | C90/270 |
| 85 | 1836 | 238 |
| 80 | 2383 | 1400 |
| 75 | 2690 | 2076 |
| 70 | 2886 | 2463 |
| 65 | 3027 | 2718 |
| 60 | 3136 | 2904 |
| 55 | 3225 | 3046 |
| 50 | 3283 | 3143 |
| 45 | 3350 | 3243 |

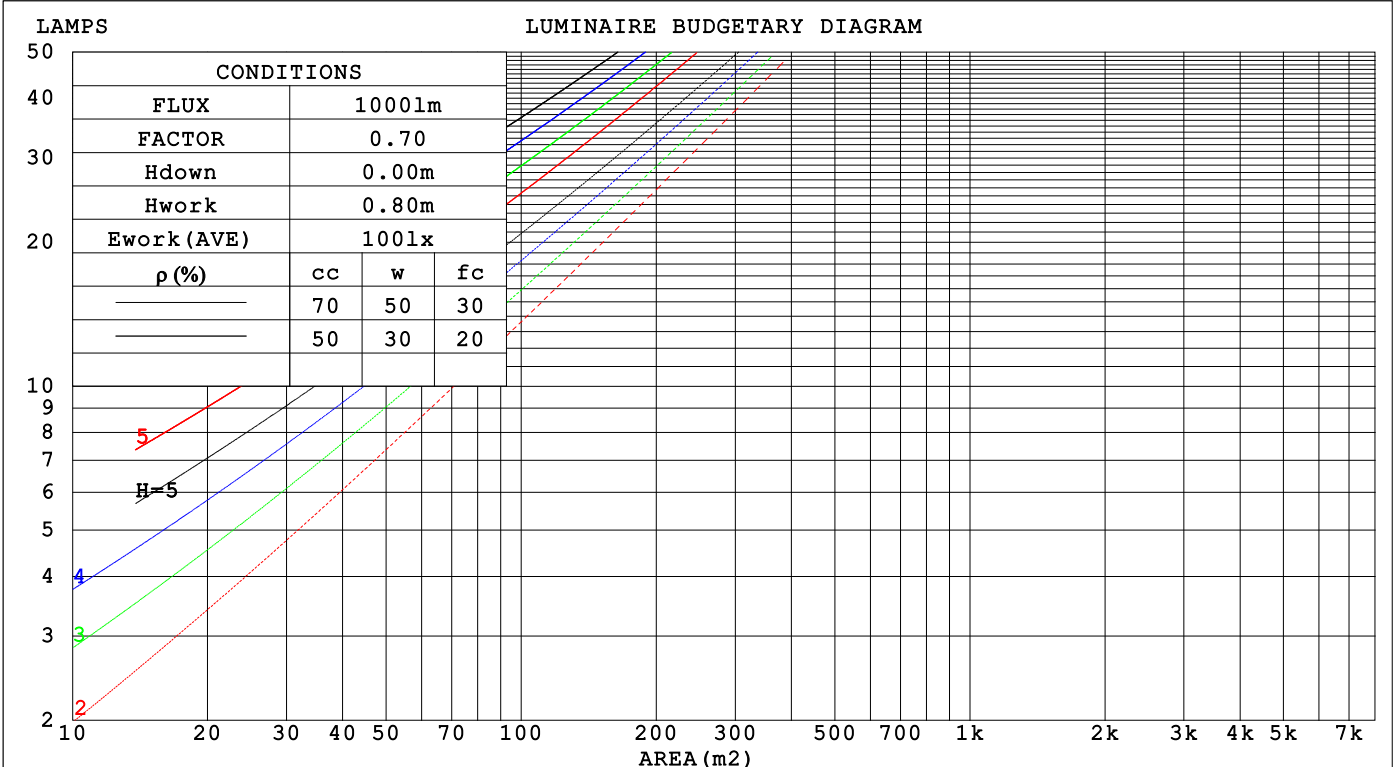
C Range: 0 - 360DEG
 C Interval: 15.0DEG
 Test Speed: HIGH
 Temperature:25.3°C
 Operators:DAMIN
 Test Date:2024-01-24

γ Range: 0 - 90DEG
 γ Interval: 5.0DEG
 Test System:EVERFINE GO-2000B_V1 SYSTEM V2.00.473
 Humidity:65.0%
 Test Distance:9.401m [K=1.0000]
 Remarks:

CU AND LUMINAIRE BUDGETARY ESTIMATE DIAGRAM

| | | |
|---|-------|------------------|
| Test:U:220.40V I:0.0870A P:10.237W PF:0.5339 Freq:50.00Hz Lamp Flux:1001.86x1 lm | | |
| NAME: | TYPE: | WEIGHT: |
| SPEC.: | DIM.: | SERIAL No.: |
| MFR.: EVERFINE | SUR.: | Shielding Angle: |

| ρcc | 80% | | | 70% | | | 50% | | | 30% | | | 10% | | | 0 |
|------|--|------|------|------|------|------|------|------|------|------|------|------|------|------|------|------|
| ρw | 50% | 30% | 10% | 50% | 30% | 10% | 50% | 30% | 10% | 50% | 30% | 10% | 50% | 30% | 10% | 0 |
| ρfc | 20% | | | 20% | | | 20% | | | 20% | | | 20% | | | 0 |
| RCR | RCR:Room Cavity Ratio Coefficients of Utilization(CU) | | | | | | | | | | | | | | | |
| 0.0 | 1.19 | 1.19 | 1.19 | 1.16 | 1.16 | 1.16 | 1.11 | 1.11 | 1.11 | 1.06 | 1.06 | 1.06 | 1.02 | 1.02 | 1.02 | 1.00 |
| 1.0 | 1.04 | 1.00 | .96 | 1.02 | .98 | .95 | .98 | .95 | .92 | .94 | .91 | .89 | .90 | .88 | .86 | .84 |
| 2.0 | .91 | .84 | .79 | .89 | .83 | .78 | .86 | .80 | .76 | .82 | .78 | .74 | .79 | .76 | .72 | .70 |
| 3.0 | .80 | .72 | .65 | .78 | .71 | .65 | .75 | .69 | .64 | .73 | .67 | .62 | .70 | .65 | .61 | .59 |
| 4.0 | .71 | .62 | .55 | .70 | .61 | .55 | .67 | .60 | .54 | .65 | .58 | .53 | .62 | .57 | .53 | .51 |
| 5.0 | .63 | .54 | .48 | .62 | .54 | .47 | .60 | .53 | .47 | .58 | .52 | .46 | .56 | .50 | .46 | .44 |
| 6.0 | .57 | .48 | .42 | .56 | .48 | .41 | .54 | .47 | .41 | .53 | .46 | .41 | .51 | .45 | .40 | .38 |
| 7.0 | .52 | .43 | .37 | .51 | .43 | .37 | .49 | .42 | .36 | .48 | .41 | .36 | .47 | .40 | .36 | .34 |
| 8.0 | .47 | .39 | .33 | .46 | .38 | .33 | .45 | .38 | .33 | .44 | .37 | .32 | .43 | .37 | .32 | .30 |
| 9.0 | .43 | .35 | .30 | .43 | .35 | .29 | .42 | .34 | .29 | .40 | .34 | .29 | .39 | .33 | .29 | .27 |
| 10.0 | .40 | .32 | .27 | .39 | .32 | .27 | .38 | .31 | .27 | .38 | .31 | .26 | .37 | .31 | .26 | .25 |



C Range: 0 - 360DEG
 C Interval: 15.0DEG
 Test Speed: HIGH
 Temperature:25.3°C
 Operators:DAMIN
 Test Date:2024-01-24

γ Range: 0 - 90DEG
 γ Interval: 5.0DEG
 Test System:EVERFINE GO-2000B_V1 SYSTEM V2.00.473
 Humidity:65.0%
 Test Distance:9.401m [K=1.0000]
 Remarks:

WEC AND CCEC

| | | | | | | | | |
|---|--|--|-------|--|--|------------------|--|--|
| Test:U:220.40V I:0.0870A P:10.237W PF:0.5339 Freq:50.00Hz | | | | | | | | |
| Lamp Flux:1001.86x1 lm | | | | | | | | |
| NAME: | | | TYPE: | | | WEIGHT: | | |
| SPEC.: | | | DIM.: | | | SERIAL No.: | | |
| MFR.: EVERFINE | | | SUR.: | | | Shielding Angle: | | |

| ρ_{CC} | 80% | | | 70% | | | 50% | | | 30% | | | 10% | | | 0 |
|-------------|-----------------------|------|------|------|------|------|----------------------------------|------|------|------|------|------|------|------|------|---|
| ρ_w | 50% | 30% | 10% | 50% | 30% | 10% | 50% | 30% | 10% | 50% | 30% | 10% | 50% | 30% | 10% | 0 |
| ρ_{fc} | 20% | | | 20% | | | 20% | | | 20% | | | 20% | | | 0 |
| RCR | RCR:Room Cavity Ratio | | | | | | Wall Exitance Coefficients (WEC) | | | | | | | | | |
| 0.0 | | | | | | | | | | | | | | | | |
| 1.0 | .302 | .172 | .054 | .295 | .168 | .053 | .281 | .161 | .052 | .269 | .155 | .050 | .258 | .150 | .048 | |
| 2.0 | .287 | .157 | .048 | .280 | .154 | .048 | .269 | .149 | .046 | .258 | .145 | .045 | .248 | .140 | .044 | |
| 3.0 | .266 | .142 | .042 | .261 | .140 | .042 | .251 | .136 | .041 | .241 | .132 | .041 | .232 | .129 | .040 | |
| 4.0 | .246 | .128 | .038 | .242 | .126 | .037 | .232 | .123 | .037 | .224 | .120 | .036 | .216 | .117 | .036 | |
| 5.0 | .228 | .116 | .034 | .224 | .115 | .033 | .216 | .112 | .033 | .208 | .110 | .033 | .201 | .108 | .032 | |
| 6.0 | .212 | .106 | .030 | .208 | .105 | .030 | .201 | .103 | .030 | .194 | .101 | .030 | .188 | .099 | .029 | |
| 7.0 | .197 | .098 | .028 | .194 | .097 | .028 | .188 | .095 | .027 | .182 | .093 | .027 | .176 | .091 | .027 | |
| 8.0 | .185 | .090 | .025 | .181 | .089 | .025 | .176 | .088 | .025 | .170 | .086 | .025 | .165 | .085 | .025 | |
| 9.0 | .173 | .084 | .023 | .170 | .083 | .023 | .165 | .082 | .023 | .160 | .080 | .023 | .156 | .079 | .023 | |
| 10.0 | .163 | .078 | .022 | .160 | .077 | .022 | .156 | .076 | .021 | .151 | .075 | .021 | .147 | .074 | .021 | |

| ρ_{CC} | 80% | | | 70% | | | 50% | | | 30% | | | 10% | | | 0 |
|-------------|-----------------------|------|------|------|------|------|---|------|------|------|------|------|------|------|------|---|
| ρ_w | 50% | 30% | 10% | 50% | 30% | 10% | 50% | 30% | 10% | 50% | 30% | 10% | 50% | 30% | 10% | 0 |
| ρ_{fc} | 20% | | | 20% | | | 20% | | | 20% | | | 20% | | | 0 |
| RCR | RCR:Room Cavity Ratio | | | | | | Ceiling Cavity Exitance Coefficients (CCEC) | | | | | | | | | |
| 0.0 | .190 | .190 | .190 | .163 | .163 | .163 | .111 | .111 | .111 | .064 | .064 | .064 | .020 | .020 | .020 | |
| 1.0 | .180 | .156 | .135 | .154 | .134 | .116 | .105 | .092 | .080 | .061 | .053 | .047 | .019 | .017 | .015 | |
| 2.0 | .172 | .132 | .099 | .147 | .114 | .085 | .101 | .079 | .059 | .058 | .046 | .035 | .019 | .015 | .011 | |
| 3.0 | .164 | .114 | .075 | .140 | .099 | .065 | .096 | .068 | .046 | .056 | .040 | .027 | .018 | .013 | .009 | |
| 4.0 | .156 | .101 | .059 | .134 | .087 | .051 | .092 | .061 | .036 | .053 | .036 | .021 | .017 | .012 | .007 | |
| 5.0 | .149 | .090 | .047 | .128 | .078 | .041 | .088 | .055 | .029 | .051 | .032 | .017 | .016 | .010 | .006 | |
| 6.0 | .142 | .082 | .039 | .122 | .071 | .034 | .084 | .050 | .024 | .049 | .029 | .014 | .016 | .010 | .005 | |
| 7.0 | .135 | .075 | .033 | .116 | .065 | .029 | .080 | .046 | .021 | .047 | .027 | .012 | .015 | .009 | .004 | |
| 8.0 | .128 | .069 | .029 | .111 | .060 | .025 | .077 | .042 | .018 | .045 | .025 | .011 | .014 | .008 | .004 | |
| 9.0 | .122 | .064 | .025 | .105 | .056 | .022 | .073 | .039 | .016 | .043 | .023 | .009 | .014 | .008 | .003 | |
| 10.0 | .117 | .060 | .023 | .101 | .052 | .020 | .070 | .037 | .014 | .041 | .022 | .008 | .013 | .007 | .003 | |

C Range: 0 - 360DEG
 C Interval: 15.0DEG
 Test Speed: HIGH
 Temperature:25.3°C
 Operators:DAMIN
 Test Date:2024-01-24

γ Range: 0 - 90DEG
 γ Interval: 5.0DEG
 Test System:EVERFINE GO-2000B_V1 SYSTEM V2.00.473
 Humidity:65.0%
 Test Distance:9.401m [K=1.0000]
 Remarks:

UGR(Unified Glare Rating) Table

| | | | | | | | | | | |
|---|------------------|------|-------|------|------|------------------|------|------|------|------|
| Test:U:220.40V I:0.0870A P:10.237W PF:0.5339 Freq:50.00Hz | | | | | | | | | | |
| Lamp Flux:1001.86x1 lm | | | | | | | | | | |
| NAME: | | | TYPE: | | | WEIGHT: | | | | |
| SPEC.: | | | DIM.: | | | SERIAL No.: | | | | |
| MFR.: EVERFINE | | | SUR.: | | | Shielding Angle: | | | | |
| ceiling/cavity | 0.7 | 0.7 | 0.5 | 0.5 | 0.3 | 0.7 | 0.7 | 0.5 | 0.5 | 0.3 |
| walls | 0.5 | 0.3 | 0.5 | 0.3 | 0.3 | 0.5 | 0.3 | 0.5 | 0.3 | 0.3 |
| working plane | 0.2 | 0.2 | 0.2 | 0.2 | 0.2 | 0.2 | 0.2 | 0.2 | 0.2 | 0.2 |
| Room dimensions | Viewed crosswise | | | | | Viewed endwise | | | | |
| x = 2H y = 2H | 16.9 | 18.4 | 17.2 | 18.6 | 18.8 | 16.6 | 18.1 | 16.9 | 18.3 | 18.5 |
| 3H | 18.5 | 19.9 | 18.8 | 20.1 | 20.3 | 18.0 | 19.4 | 18.3 | 19.6 | 19.8 |
| 4H | 19.1 | 20.4 | 19.4 | 20.6 | 20.9 | 18.4 | 19.7 | 18.7 | 20.0 | 20.2 |
| 6H | 19.5 | 20.7 | 19.8 | 21.0 | 21.3 | 18.6 | 19.8 | 18.9 | 20.1 | 20.4 |
| 8H | 19.5 | 20.7 | 19.9 | 21.0 | 21.3 | 18.5 | 19.7 | 18.8 | 20.0 | 20.3 |
| 12H | 19.6 | 20.7 | 19.9 | 21.0 | 21.3 | 18.5 | 19.6 | 18.8 | 19.9 | 20.2 |
| 4H 2H | 17.5 | 18.8 | 17.8 | 19.1 | 19.3 | 17.2 | 18.6 | 17.6 | 18.8 | 19.1 |
| 3H | 19.2 | 20.3 | 19.5 | 20.6 | 20.9 | 18.7 | 19.9 | 19.1 | 20.2 | 20.5 |
| 4H | 19.9 | 21.0 | 20.3 | 21.3 | 21.6 | 19.3 | 20.3 | 19.6 | 20.6 | 21.0 |
| 6H | 20.4 | 21.3 | 20.8 | 21.7 | 22.1 | 19.5 | 20.4 | 19.9 | 20.8 | 21.1 |
| 8H | 20.5 | 21.4 | 20.9 | 21.7 | 22.1 | 19.4 | 20.3 | 19.9 | 20.7 | 21.1 |
| 12H | 20.6 | 21.4 | 21.0 | 21.7 | 22.2 | 19.4 | 20.2 | 19.8 | 20.6 | 21.0 |
| 8H 4H | 20.1 | 20.9 | 20.5 | 21.3 | 21.7 | 19.5 | 20.4 | 19.9 | 20.7 | 21.1 |
| 6H | 20.6 | 21.4 | 21.1 | 21.8 | 22.2 | 19.8 | 20.5 | 20.2 | 20.9 | 21.3 |
| 8H | 20.8 | 21.4 | 21.2 | 21.8 | 22.3 | 19.7 | 20.4 | 20.2 | 20.8 | 21.3 |
| 12H | 20.9 | 21.4 | 21.4 | 21.9 | 22.4 | 19.7 | 20.3 | 20.2 | 20.7 | 21.2 |
| 12H 4H | 20.0 | 20.8 | 20.5 | 21.2 | 21.6 | 19.5 | 20.3 | 19.9 | 20.7 | 21.1 |
| 6H | 20.6 | 21.3 | 21.1 | 21.7 | 22.1 | 19.8 | 20.4 | 20.2 | 20.8 | 21.3 |
| 8H | 20.8 | 21.3 | 21.2 | 21.8 | 22.2 | 19.7 | 20.3 | 20.2 | 20.7 | 21.2 |
| Variations with the observer position at spacings(CIE Pub.117): | | | | | | | | | | |
| S = 1.0H | + 0.1 / - 0.2 | | | | | + 0.2 / - 0.2 | | | | |
| 1.5H | + 0.1 / - 0.3 | | | | | + 0.2 / - 0.4 | | | | |
| 2.0H | + 0.3 / - 0.3 | | | | | + 0.3 / - 0.5 | | | | |

CIE Pub.117, 1002 lm Total Lamp Luminous Flux Correct (8log(F/F0) = 0.0)
 Area: 0.1 m2

C Range: 0 - 360DEG
 C Interval: 15.0DEG
 Test Speed: HIGH
 Temperature:25.3°C
 Operators:DAMIN
 Test Date:2024-01-24

γ Range: 0 - 90DEG
 γ Interval: 5.0DEG
 Test System:EVERFINE GO-2000B_V1 SYSTEM V2.00.473
 Humidity:65.0%
 Test Distance:9.401m [K=1.0000]
 Remarks:

UTILIZATION FACTORS TABLE

| | | |
|---|-------|------------------|
| Test:U:220.40V I:0.0870A P:10.237W PF:0.5339 Freq:50.00Hz Lamp Flux:1001.86x1 lm | | |
| NAME: | TYPE: | WEIGHT: |
| SPEC.: | DIM.: | SERIAL No.: |
| MFR.: EVERFINE | SUR.: | Shielding Angle: |

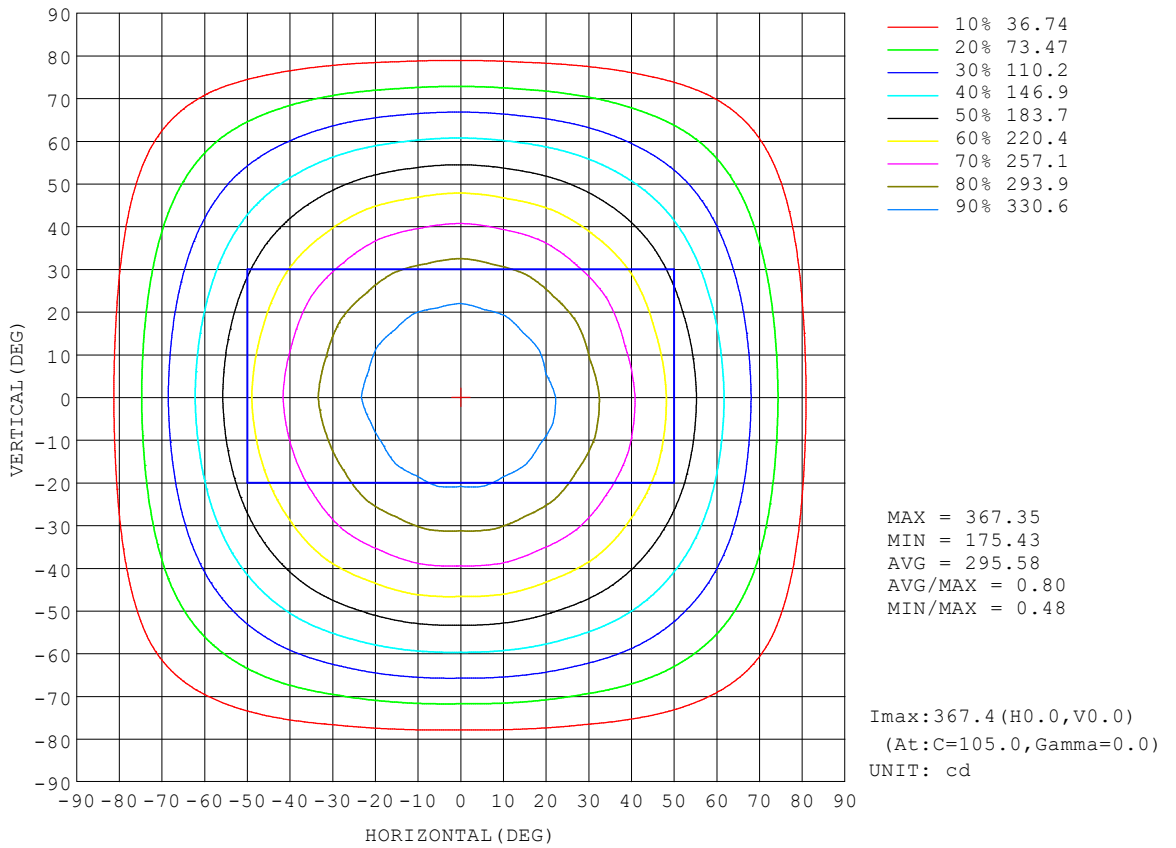
| REFLECTANCE | | | | | | | | | | |
|----------------------------------|--|-----|-----------|-----|-----|-----|---------------|-----|-----|--------|
| Ceiling | 0.8 | 0.8 | 0.8 | 0.7 | 0.7 | 0.7 | 0.5 | 0.5 | 0.5 | 0 |
| Walls | 0.7 | 0.5 | 0.3 | 0.7 | 0.5 | 0.3 | 0.7 | 0.5 | 0.3 | 0 |
| Working plane | 0.2 | 0.2 | 0.2 | 0.2 | 0.2 | 0.2 | 0.2 | 0.2 | 0.2 | 0 |
| ROOM INDEX | UTILIZATION FACTORS (PERCENT) $k(RI) \times RCR = 5$ | | | | | | | | | |
| k = 0.60 | 58 | 47 | 40 | 57 | 46 | 39 | 56 | 46 | 39 | 33 |
| 0.80 | 68 | 57 | 49 | 67 | 56 | 49 | 65 | 55 | 49 | 42 |
| 1.00 | 77 | 66 | 58 | 75 | 65 | 58 | 73 | 66 | 58 | 50 |
| 1.25 | 84 | 73 | 66 | 82 | 73 | 66 | 80 | 71 | 65 | 58 |
| 1.50 | 89 | 79 | 72 | 87 | 78 | 71 | 84 | 76 | 70 | 63 |
| 2.00 | 95 | 87 | 81 | 94 | 86 | 80 | 90 | 84 | 78 | 71 |
| 2.50 | 99 | 92 | 86 | 97 | 90 | 85 | 93 | 88 | 83 | 75 |
| 3.00 | 103 | 96 | 91 | 101 | 94 | 89 | 96 | 91 | 87 | 79 |
| 4.00 | 107 | 101 | 97 | 104 | 99 | 95 | 100 | 96 | 92 | 84 |
| 5.00 | 109 | 104 | 100 | 107 | 102 | 99 | 102 | 99 | 96 | 87 |
| ROOM INDEX | UF(total) | | | | | | | | | Direct |
| According to DIN EN 13032-2 2004 | | | Suspended | | | | SHRNOM = 1.25 | | | |

C Range: 0 - 360DEG
 C Interval: 15.0DEG
 Test Speed: HIGH
 Temperature:25.3°C
 Operators:DAMIN
 Test Date:2024-01-24

γ Range: 0 - 90DEG
 γ Interval: 5.0DEG
 Test System:EVERFINE GO-2000B_V1 SYSTEM V2.00.473
 Humidity:65.0%
 Test Distance:9.401m [K=1.0000]
 Remarks:

ISOCANDELA DIAGRAM

| | | |
|---|-------|------------------|
| Test:U:220.40V I:0.0870A P:10.237W PF:0.5339 Freq:50.00Hz Lamp Flux:1001.86x1 lm | | |
| NAME: | TYPE: | WEIGHT: |
| SPEC.: | DIM.: | SERIAL No.: |
| MFR.: EVERFINE | SUR.: | Shielding Angle: |

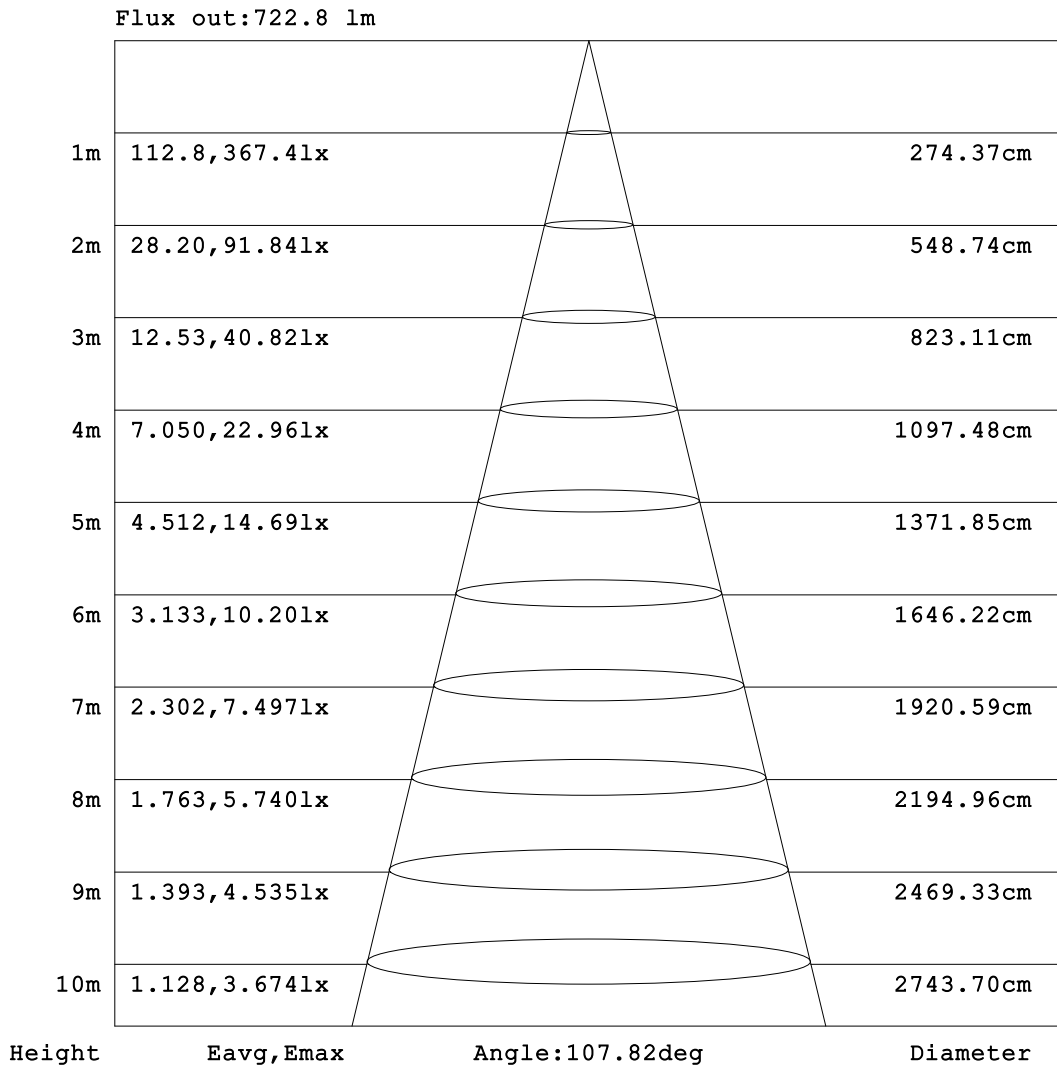


C Range: 0 - 360DEG
 C Interval: 15.0DEG
 Test Speed: HIGH
 Temperature:25.3°C
 Operators:DAMIN
 Test Date:2024-01-24

γ Range: 0 - 90DEG
 γ Interval: 5.0DEG
 Test System:EVERFINE GO-2000B_V1 SYSTEM V2.00.473
 Humidity:65.0%
 Test Distance:9.401m [K=1.0000]
 Remarks:

AAI Figure

| | | |
|---|-------|------------------|
| Test:U:220.40V I:0.0870A P:10.237W PF:0.5339 Freq:50.00Hz Lamp Flux:1001.86x1 lm | | |
| NAME: | TYPE: | WEIGHT: |
| SPEC.: | DIM.: | SERIAL No.: |
| MFR.: EVERFINE | SUR.: | Shielding Angle: |



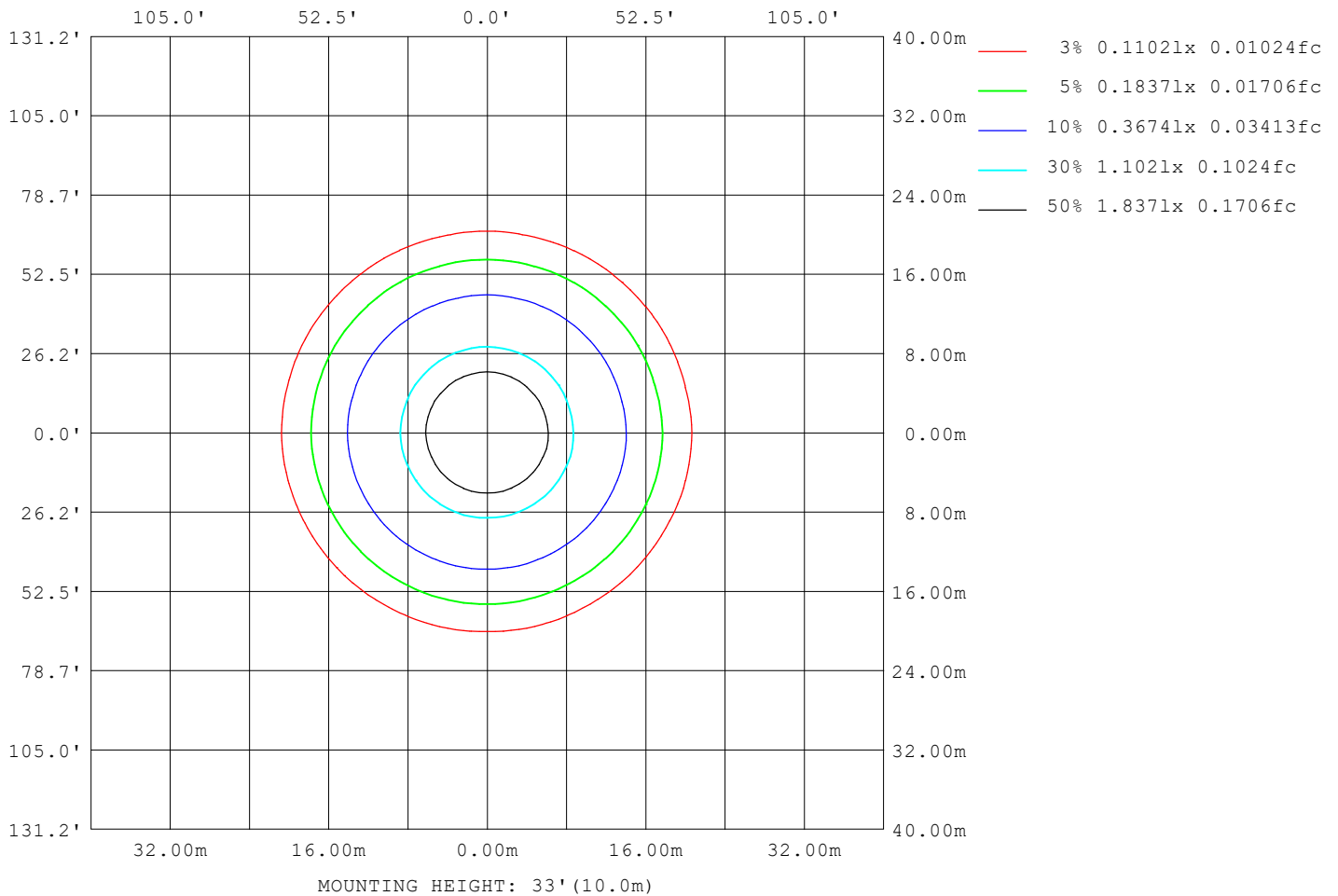
Note:The Curves indicate the illuminated area and the average illumination when the luminaire is at different distance.

C Range: 0 - 360DEG
C Interval: 15.0DEG
Test Speed: HIGH
Temperature:25.3°C
Operators:DAMIN
Test Date:2024-01-24

γ Range: 0 - 90DEG
γ Interval: 5.0DEG
Test System:EVERFINE GO-2000B_V1 SYSTEM V2.00.473
Humidity:65.0%
Test Distance:9.401m [K=1.0000]
Remarks:

ISOLUX DIAGRAM

| | | |
|---|-------|------------------|
| Test:U:220.40V I:0.0870A P:10.237W PF:0.5339 Freq:50.00Hz Lamp Flux:1001.86x1 lm | | |
| NAME: | TYPE: | WEIGHT: |
| SPEC.: | DIM.: | SERIAL No.: |
| MFR.: EVERFINE | SUR.: | Shielding Angle: |



C Range: 0 - 360DEG
 C Interval: 15.0DEG
 Test Speed: HIGH
 Temperature:25.3°C
 Operators:DAMIN
 Test Date:2024-01-24

γ Range: 0 - 90DEG
 γ Interval: 5.0DEG
 Test System:EVERFINE GO-2000B_V1 SYSTEM V2.00.473
 Humidity:65.0%
 Test Distance:9.401m [K=1.0000]
 Remarks:

LED Avg.L Report

| | | |
|---|-------|------------------|
| Test:U:220.40V I:0.0870A P:10.237W PF:0.5339 Freq:50.00Hz Lamp Flux:1001.86x1 lm | | |
| NAME: | TYPE: | WEIGHT: |
| SPEC.: | DIM.: | SERIAL No.: |
| MFR.: EVERFINE | SUR.: | Shielding Angle: |

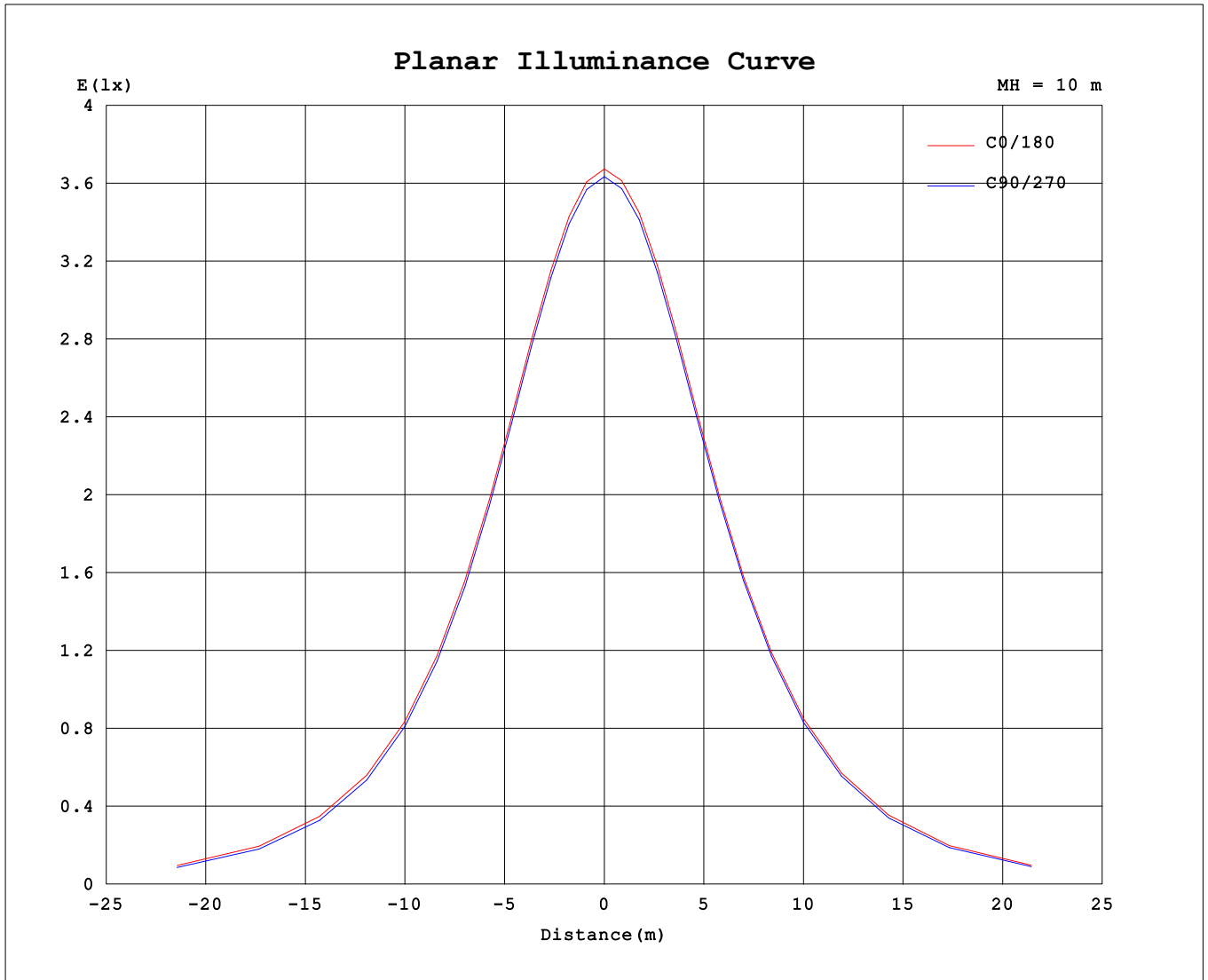
| AvgL | cd/m2 |
|------------------|-------|
| L_0~180 (65) av | 3034 |
| L_0~180 (75) av | 2713 |
| L_0~180 (85) av | 1898 |
| L_90~270 (65) av | 2797 |
| L_90~270 (75) av | 2202 |
| L_90~270 (85) av | 383 |
| L_45 (65) av | 2903 |
| L_45 (75) av | 2416 |
| L_45 (85) av | 709 |

Standard: GB/T 29293-2012

C Range: 0 - 360DEG
 C Interval: 15.0DEG
 Test Speed: HIGH
 Temperature:25.3°C
 Operators:DAMIN
 Test Date:2024-01-24

γ Range: 0 - 90DEG
 γ Interval: 5.0DEG
 Test System:EVERFINE GO-2000B_V1 SYSTEM V2.00.473
 Humidity:65.0%
 Test Distance:9.401m [K=1.0000]
 Remarks:

Planar Illuminance Curve



C Range: 0 - 360DEG
 C Interval: 15.0DEG
 Test Speed: HIGH
 Temperature: 25.3°C
 Operators: DAMIN
 Test Date: 2024-01-24

γ Range: 0 - 90DEG
 γ Interval: 5.0DEG
 Test System: EVERFINE GO-2000B_V1 SYSTEM V2.00.473
 Humidity: 65.0%
 Test Distance: 9.401m [K=1.0000]
 Remarks:

